

Middleton House Solar Farm Newsletter Issue 13th October 2023

Middleton House Solar Farm is a new renewable energy project located to the west of Killashee, Co. Longford. It will be developed by ESB Solar Ireland. See www.middletonhousesolarfarm.ie for more details.

The project has received full planning permission to generate 56.6MW of clean electricity that will have enough capacity to power over 15,000 homes.

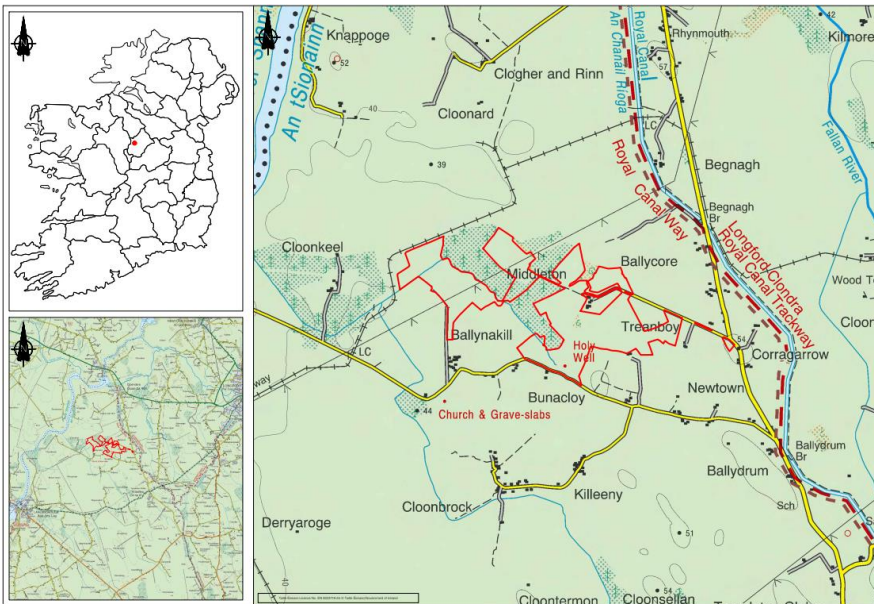
As part of this project, we are committed to engaging closely with the local communities surrounding the site to ensure the successful delivery of Middleton House Solar Farm by 2025.

Commented [SC(aT1): Date to be confirmed

Commented [BM(aT2): Added I

Commented [LT3]: 2025?

Commented [SC(aT4): To be updated



Three separate planning applications were granted for the Project by Longford County Council for the original Solar Farm project in 2018 (reference PL-18/135) a subsequent extension to the site footprint in 2021 (reference PL-21/225) and the grid route and transformer compound in May 2023 (reference PL-22/275).

The project successfully secured a capacity contract in the RESS 2 auction in June 2022.

Middleton House Solar Farm will connect to the electricity grid at Lanesboro 110kV Substation. A 5.7km underground cable will connect the solar farm to new transformer compound on the former Lough Ree Power Site and from there to the electricity grid at Lanesboro 110kV substation.

Development Timeline

Construction of this project is due to commence in Q4 2023.

Q4 2023-Spring 2024: Enabling works to provide access to the site.

Spring 2025: – Commissioning and project operational.

Traffic Management

Where will the site access be?

The principle site entrance will be accessed from a new site entrance constructed on the L1162 (cul the sac) approximately 500m west of where the L1162 meets the L1170 “Cloondara Road”. Secondary access will also be utilised via the existing Middleton House entrance 50m east of the primary entrance and at Bunacloy to the south west of the site. Two temporary passing bays will be constructed on the L1162 between the site entrance and junction with L1170 Cloondara Road and will operate during the construction phase. All HGV traffic to the site will turn off the N63 at Killahsee.

A detailed traffic management plan will be agreed with Longford County Council prior to construction.

Commented [SC(aT5)]: Need to update

Commented [SC(aT6R5)]: @Michael Butler can you review this paragraph once CEMP is approved by Longford CoCo

Commented [BM(aT7)]: Added o

Once constructed and operational the only traffic to occur will be for occasional maintenance visits. The impacts of such traffic will be negligible.

Will there be traffic diversions & delays?

Diversion and delays will be kept to a minimum when the detailed traffic management plan is put in place. The project will arrange leaflet updates and communications on this.

'Contact Us'

The project team is committed to keeping the local community up to date with the construction of Middleton House Solar Farm.

Our Community Liaison Officer (**CLO**) Garry Keegan and members of the project team are available to meet you to discuss all aspects of the project at your convenience. We will provide regular updates through the project website as the project progresses.

Website: www.middletonhousesolarfarm.ie

Email: ESBSolarFarms@esb.ie

Phone: 0862358913 (Garry Keegan - CLO)

Post: Middleton House Solar Farm Project

ESB Head Office

27 Fitzwilliam Street Lower

Dublin 2

D02 KT92

Ireland

Commented [NE(aT8)]: Is Garry appointed on MH? I would be preferred to have a contact mobile number on the newsletter

Commented [HT9R8]: Yes that can be added

Commented [SC(aT10R8)]: Added